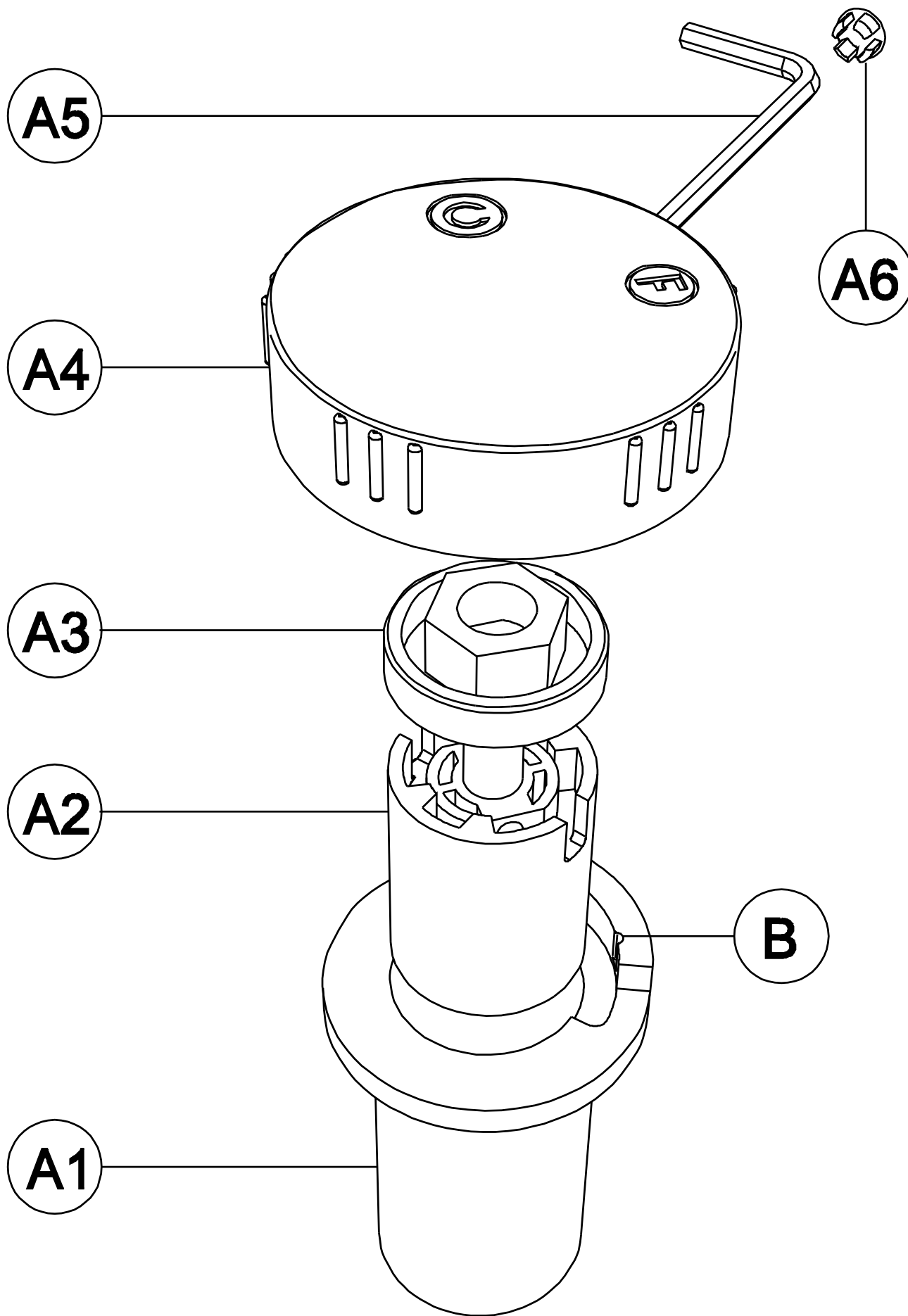


Swich valve replacement

abode



Swich valve replacement

General Advice:

- These instructions are intended as a guide only, if you are in any doubt you should seek the advice of a qualified professional.
- Take care not to mark finished parts with screwdrivers or other tools.
- Use a pair of rubber gloves to get a better grip on decorative hand tight parts.
- Ensure all parts are reassembled tightly.
- After maintenance test that all assemblies are water tight and function correctly.
- Always isolate the hot and cold water supplies before starting any maintenance, once isolated you should drain any residual water from your system.

To replace the cold/filter valve:

1. Isolate the cold water mains (close the stop cock), check that no cold or filtered water flows from your tap.
2. Using a small flat screwdriver or similar lever dust cap (A6) away from the handle (A4).
3. Place a 3mm A/F Allen key (long end first) into the revealed hole in handle (A4), whilst pulling the handle (A4) upwards loosen the grub screw inside handle (A4). The handle will list away from the body (A1).
4. Using a 16mm A/F socket or adjustable spanner (end on) unscrew the valve lock nut (A3).
5. Pull the valve (A2) upwards away from body (A1). Ensure all parts of the valve including the base gaskets are removed.
6. Clean any debris from the chamber in the body (A1).
7. Place the new valve (A2) into the body (A1) **ensuring that the pegs on the base of the valve (A2) match up with those in the tap chamber (A1), you should note that one peg is slightly larger than the other.**
8. Screw the valve lock nut (A3) down over the valve (A2) securing the valve.
9. Rotate the valve spindle (A2) anticlockwise until it stops.
10. Push the handle (A4) down onto the valve spindle (A2), note that the © symbol on the handle should be pointing to 9 o'clock.
11. Tighten the grub screw in handle (A4) using Allen Key (A5), securing the handle.
12. Push the dust cap (A6) back into the hole on the rear of handle (A4)

Reconnect the cold water supply and check the area surrounding the handle for any leaks, if any leaks are present the valve lock nut (A3) should be tightened further.